

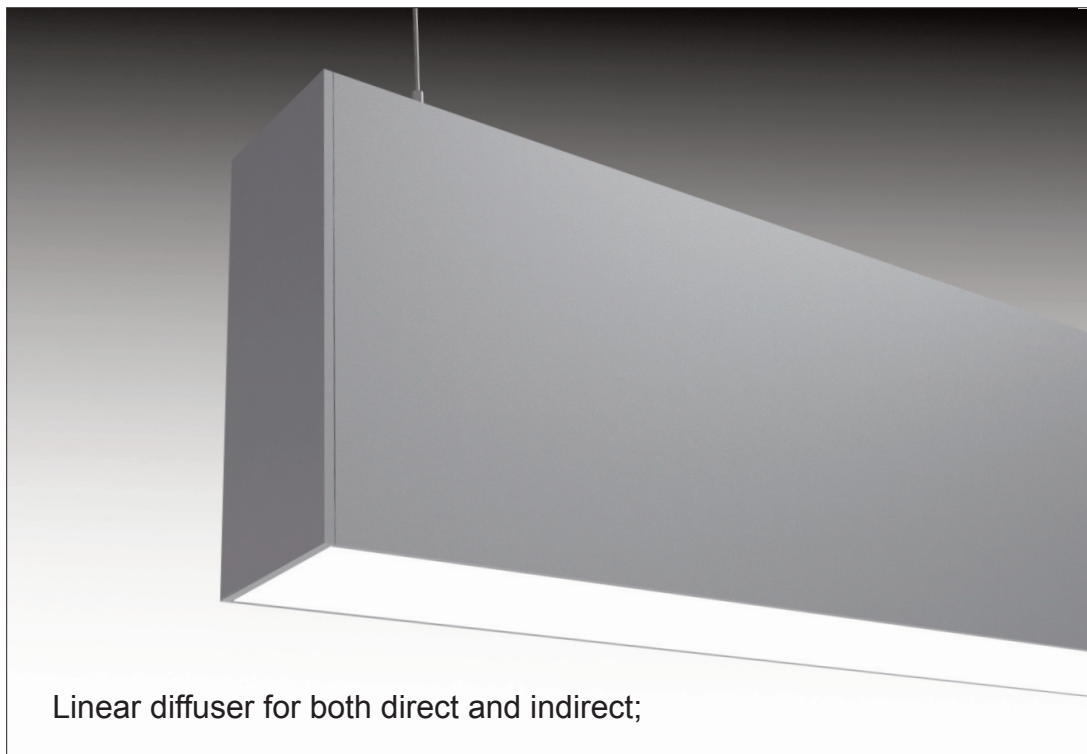
---

## HBEAM - HB

Indirect / Direct

Suspended

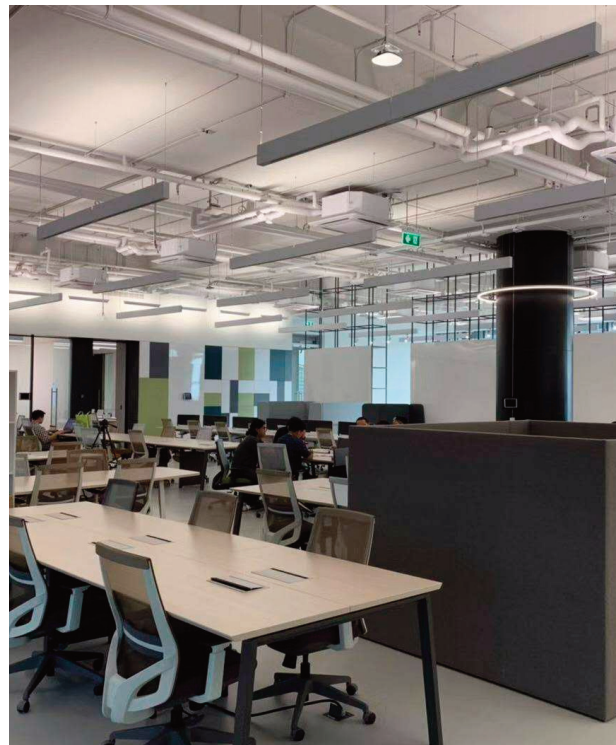
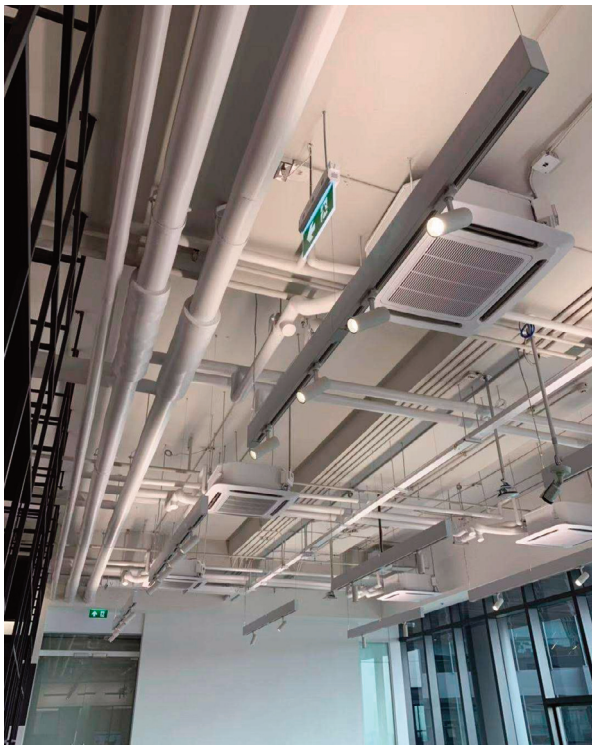
Wall



# HBEAM — HB

INDIRECT / DIRECT - Suspended, Wall

# ZALITE

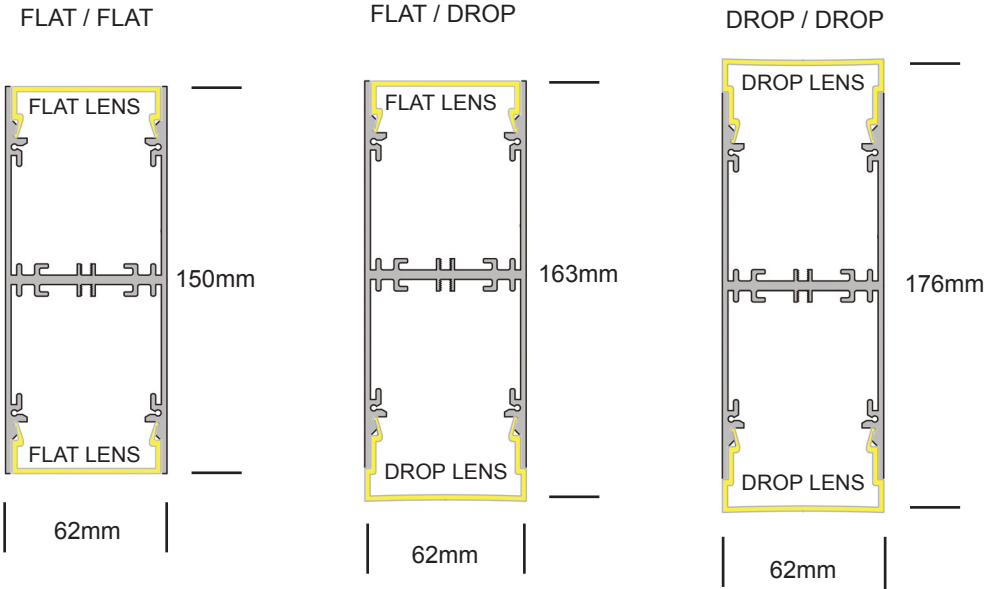


# HBEAM — HB

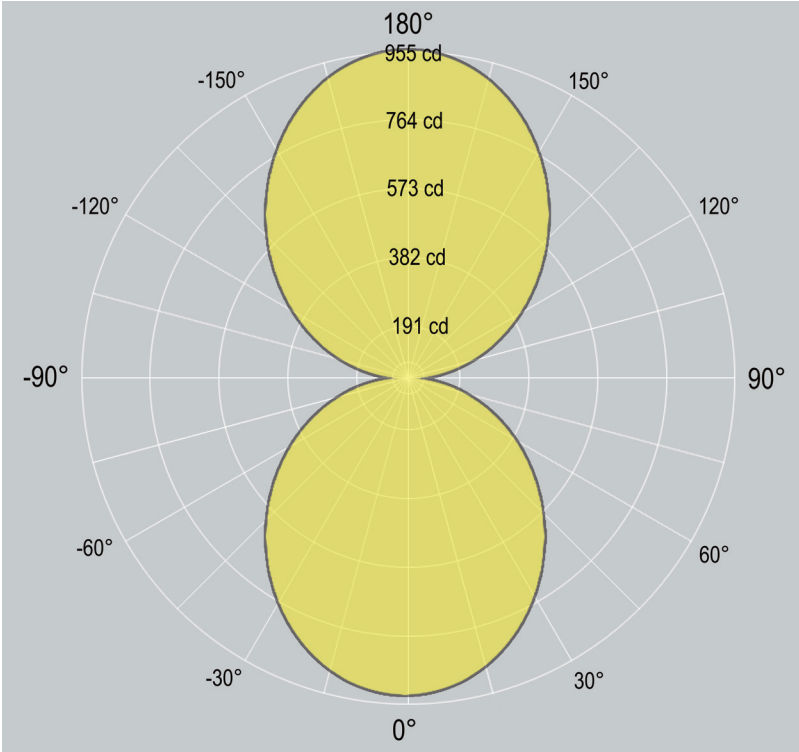
INDIRECT / DIRECT - Suspended, Wall



## Dimensions



## Distribution



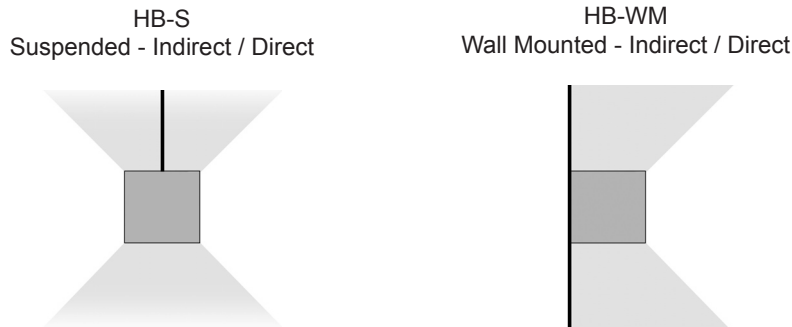
# HBEAM — HB

INDIRECT / DIRECT - Suspended, Wall



## 1. Base Model

HB-S	Suspended (Indirect / Direct)
HB-WM	Wall Mounted (Indirect / Direct)



## 2. Run Length

Enter total linear length, (example: 6M)

## 3. Lamping (direct and indirect)

STD - <b>xxxxK</b> (example: STD-4000K)	Standard Output, LED 2x20W/M 5100 delivered lumen, 88 lm/W
HI - <b>xxxxK</b> (example: HI-4000K)	High Output, LED 2x30W/M 5880 delivered lumen, 84 lm/W
	CCT: 3000K 3500K 4000K Option: 2700K 5000K 5700K 6500K Dual LED strip available
CV - <b>xxxxK</b>	Additional LED Options Constant Voltage (for custom lengths) 24/12VDC Contact factory for detail
TW	Tunable White (2700K - 6500K) Contact factory for detail
RGBW	RGB+WHITE - 24/12VDC Contact factory for detail

## 4. Driver

0/1-10V	0/1-10V dimming
DALI	DALI dimming
DMX	DMX dimming
NONDIM	Non-dimmable
OTHER	(Consult factory for options)

# HBEAM — HB

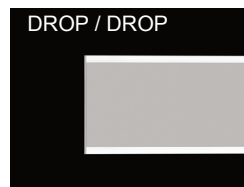
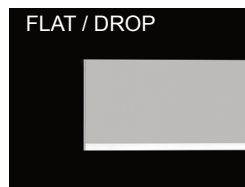
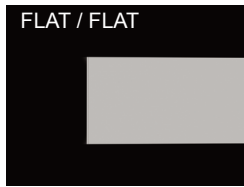
INDIRECT / DIRECT - Suspended, Wall

# ZALITE

## 6. Lens

---

FLAT / FLAT	FLAT Lens for Indirect / FLAT Lens for Direct
FLAT / DROP	FLAT Lens for Indirect / DROP Lens for Direct
DROP / DROP	FLAT Lens for Indirect / FLAT Lens for Direct
PRI	Prismatic lens(LOW UGR)
ASY+WD	Asymmtric lens+CLEAR LENS



## 7. Finish

---

AL	Standard, natural aluminum
BK	Black powdercoat
WH	White powdercoat
Custom	Custom Color

## 8. Additional options

---

EM	1.5 hour Emergency Kit
MS	Motion sensor
Others	Contact factory

# HBEAM — HB

INDIRECT / DIRECT - Suspended, Wall

# ZALITE

---

## Housing

100% recyclable, extruded architectural grade T6063 aluminum

---

## Emergency

Luminaires can be wired for emergency circuit and/or emergency battery backup. Consult factory for options.

---

## Options

### Mitered Corners

Consult factory for mitered corner angle options.

---

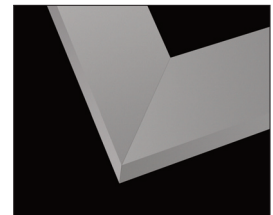
## Finish

Standard finish is "Ultimate" aluminum - a smooth, clean and durable finish achieved from a deep-etch and two step clear anodizing process.

White, Black, Custom powdercoat options also available.



Suspension & Power



Mitered Corners



WH - WHITE



AL - ALUMINUM



BK - BLACK



Custom / \_\_\_\_

Default canopy finish is to match fitting color, unless otherwise specified



ISO 9001:2015