

**Upgraded to**

- **Seamless Rolled Lens**
- **Up to 112lm/W**

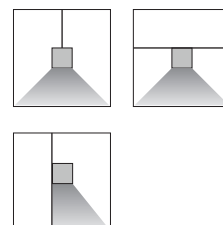
LPLD-P-S-1000-STR-20W-STD-WH

## Features

- Rolled lens presents seamless continuous light
- Flood and accent distribution combination
- Custom shapes and configurations
- Built-in driver, dim or non-dim available
- Wide range of finishes
- 100% recyclable, extruded architectural grade T6063 aluminum

## Mounting

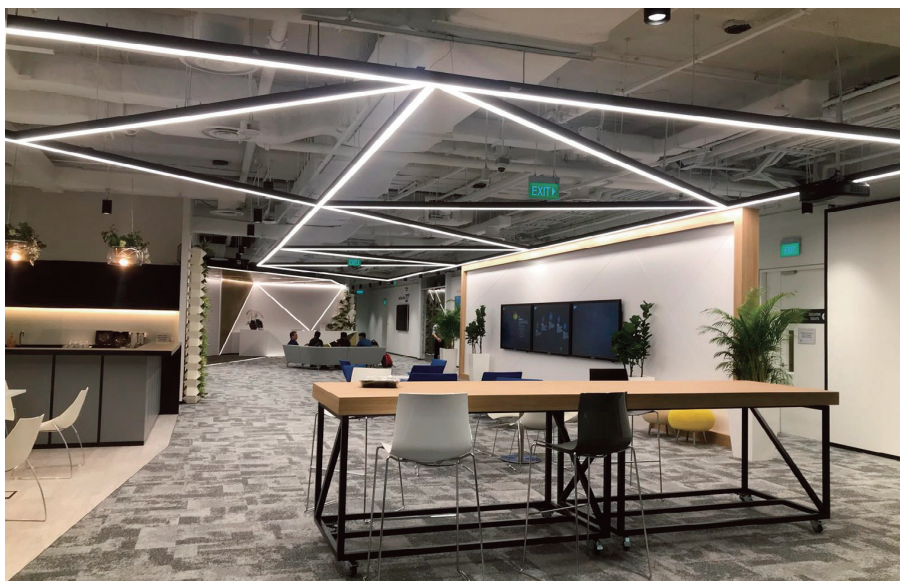
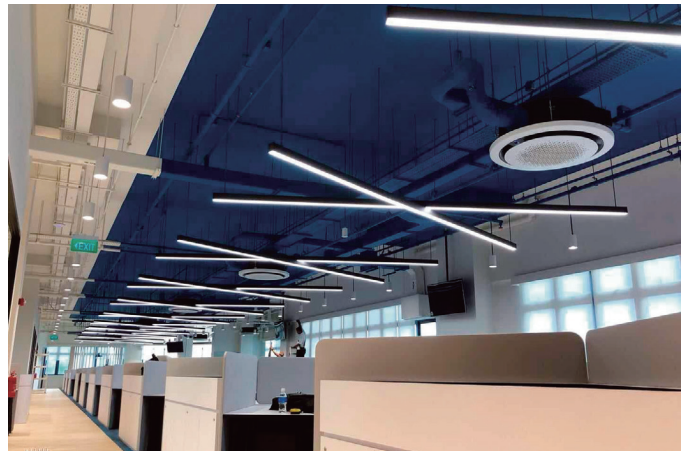
- Suspended, surface



# Lightplane Linear Deep - LPLD PLUS

Suspended, Surface

# ZALITE

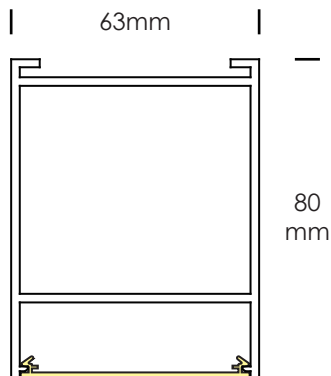


Errors and technical changes excepted. Images can vary from original.  
Photometric and electrical data may vary due to component tolerances.

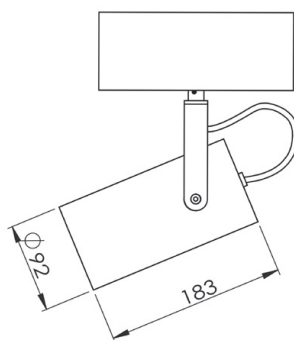
ZALITE.CN

2 of 8

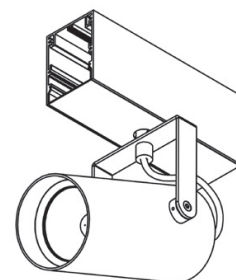
## Dimensions



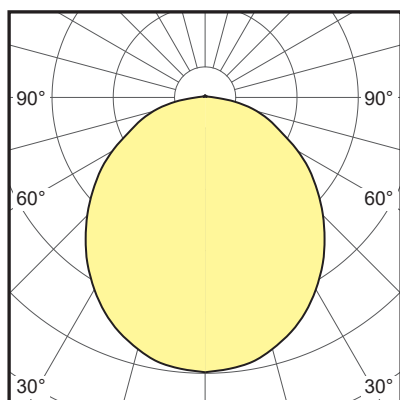
LPLD



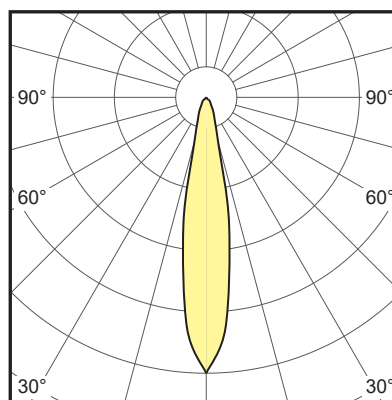
HV SPOT



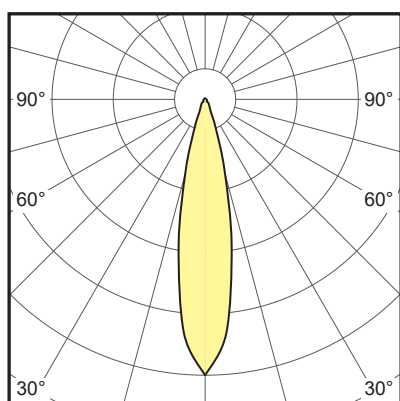
## Distributions



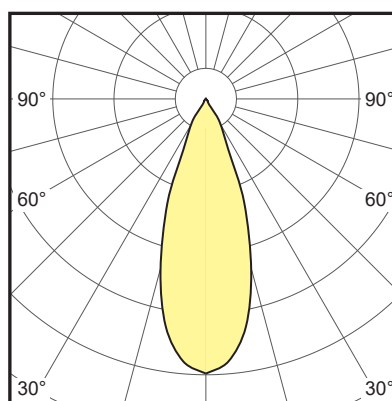
LPLD- LED strip



HV SPOT - 18°



HV SPOT - 24°



HV SPOT - 36°

## Ordering Info

### 1. BASIC MODEL

LPLD-P-S	Suspended - direct / indirect
LPLD-P-SM	Surface mount - direct only
LPLD-P-WM	Wall mount - direct / indirect

### 2. SIZE AND SHAPE

xxxxmm - STR	Straight - specify individual or continuous run length in mm
xxxxmm - SQ	Square - specify outside dimension in mm
xxxxmm - REC	Rectangle - specify outside dimension in mm
xxxxmm - TEE	T- Shape - specify length in mm
xxxxmm - Special Shape	Radom connection of sectional straight

\* Sample configuration diagrams as below.



Square



Rectangle



U-Shape



T-Shape



Cross



Zed

### 3. LED LAMPING - LPLD

<b>LOW - xxxxK</b>	Linear LED strip, low output, LED 10W/M
<b>STD - xxxxK</b>	Linear LED strip, standard output, LED 20W/M
<b>HI - xxxxK</b>	Linear LED strip, high output, LED 30W/M

Note: Standard CCT: 3000K, 3500K, 4000K; CRI80 and CRI90 are available.

Other option: 2700K, 5000K, 5700K, 6500K, red, green, blue, TUNE(2700K-6500K). Contact factory for details.

See page 7 for information of LED lamping output.

### 4. LED LAMPING - HV SPOT

<b>??-25W-xxxxK-18</b>	25W spot, 18° - specify the quantity(??) and CCT(xxxxK) of spot
<b>??-25W-xxxxK-24</b>	25W spot, 24° - specify the quantity(??) and CCT(xxxxK) of spot
<b>??-25W-xxxxK-36</b>	25W spot, 36° - specify the quantity(??) and CCT(xxxxK) of spot

Note: Standard CCT: 3000K, 3500K, 4000K; CRI80 and CRI90 are available. Contact factory for other custom spec.

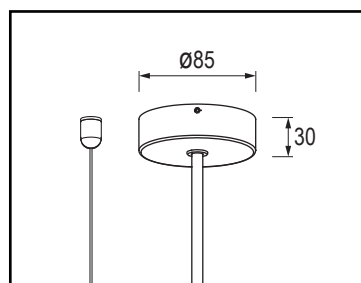
See page 7 for information of LED lamping output.

### 5. DRIVER

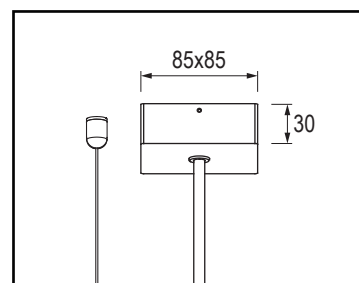
<b>STD</b>	Non-dimmable
<b>0/1-10V</b>	1-10V / 0-10V dimming
<b>DALI</b>	DALI dimming
<b>DMX</b>	DMX dimming
<b>OTHER</b>	Consult factory for options

### 6. SUSPENSION MOUNT CANOPY

<b>RC</b>	Canopy in round shape - suspended only
<b>SC</b>	Canopy in square shape - suspended only



Round canopy



Square canopy

## 7. FINISH

<b>BK</b>	Matt black powercoat
<b>WH</b>	Matt white powercoat
<b>SG</b>	Silver grey powercoat
<b>CF</b>	Custom finish - RAL or Pantone or other finish options



Matt black



Matt white



Silver grey



Custom

## 8. OPTIONAL ADD-ONS

<b>EM</b>	1.5 hour emergency kit (remote only)
<b>SS</b>	Sensor
<b>OTHERS</b>	Consult factory for options

## SPECIFICATION DETAILS

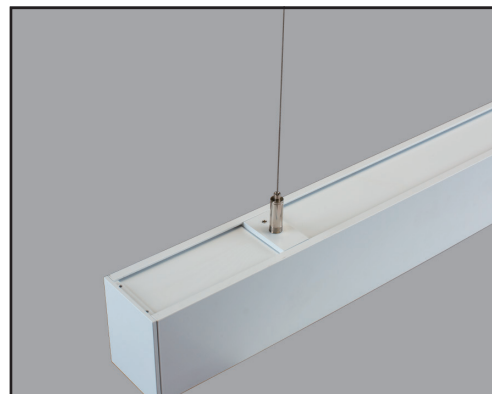
### ROLLED PRISMATIC LENS

The optically engineered rolled lens provides smooth, uniform and seamless illumination for linear lengths of 30 meters while dynamically controlling output and reducing glare. The rolled lens rolls out and snaps into the housing profile for easy installation.



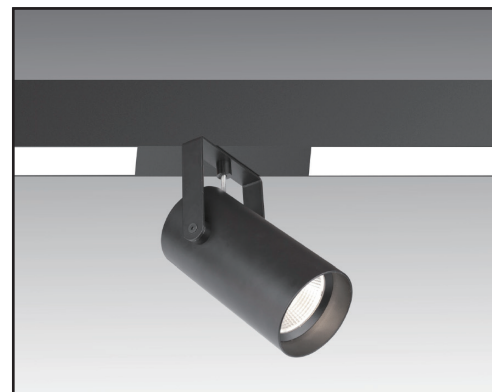
### SLIDED SUSPENSION KIT

The fixture is designed with slided suspension kit for suspended mounting. The slided suspension kit provides flexible and convenient installation in field. It's available to change the position and quantity of suspension kits when the ceiling layout is changed during installation.



### HV SPOT

HV Spot can be rotatable 355 degrees and adjustable 90 degrees. The high-quality reflector ensures a particularly precise beam characteristic at three different angles (18/24/36 deg). The spot can come with non-dimmable driver or dimmable driver which is installed in LPLD housing.

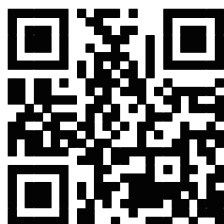


## SPECIFICATION DETAILS

### PERFORMANCE DATA - LED LAMPING

OUTPUT OPTIONS	DELIVERED LUMENS	WATTS	CRI OPTIONS	CCT OPTIONS	LED LAMPING
LPLD-LOW	1224	10.9	80 90	2700K 3000K 3500K 4000K 5000K 6500K	LED strip, 4000K
LPLD-STD	2415	21.6			LED strip, 4000K
LPLD-HI	3638	33.6			LED strip, 4000K
HVS-4000K	2420	27.2			HV Spot, 4000K
HVS-3000K	2342	27.2			HV Spot, 3000K

*Note: Data provided for LED strip options is from a photometric test of 1 meter fixture output with 90CRI at 4000K using a non-dimmable driver.  
Data provided for spot options is from a photometric test of one spotlight output with 80CRI at 4000K using a non-dimmable driver.*



*More information and data,  
please visit:  
[www.lightforms.com.cn](http://www.lightforms.com.cn)*

V1.0\_2025-06