

ZALITE Moonring 2 Snake Spot Recessed

SPEC SHEET

- MR2SS-RT



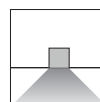
MR2SS-RT-650-CIRCLE-SSTD-STD-BK

Features

- Low UGR reflector design
- Rolled soft acrylic lens presents seamless continuous light
- Custom curved or straight shapes and configurations
- Dim or non-dim driver available
- Wide range of finishes
- 100% recyclable, extruded architectural grade T6063 aluminum

Mounting

- Recessed

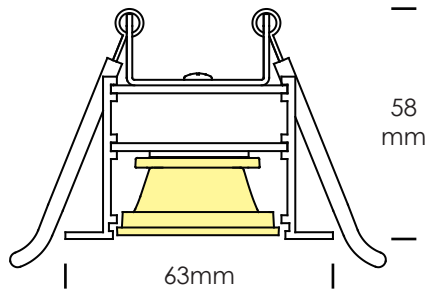


PHOTOS



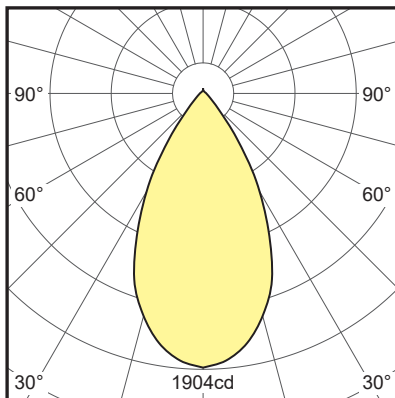
Recessed

Dimensions

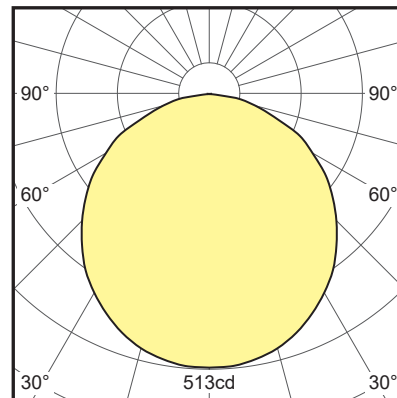


Recessed
Cut out: 55mm

Distributions



Spot cluster- direct



LED strip- direct

Recessed

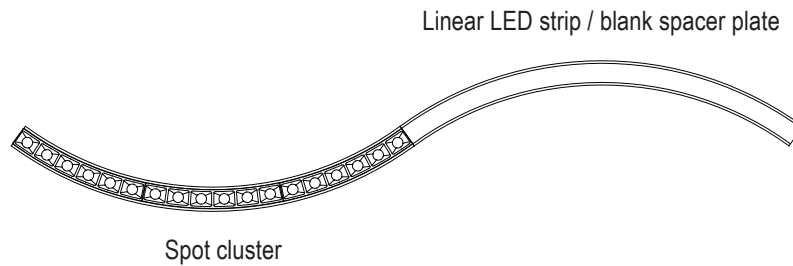
3. LED LAMPING

L - STD - xxxxK	Linear LED strip, standard output, LED 20W/M
L - HI - xxxxK	Linear LED strip, high output, LED 30W/M
S - LOW - xxxxK	Spot cluster, low output, LED 5.4W per cluster
S - STD - xxxxK	Spot cluster, standard output, LED 7.2W per cluster
S - HI - xxxxK	Spot cluster, high output, LED 9W per cluster
NON	No Linear LED strip or spot cluster, with blank spacer plate

Note: Standard CCT: 3000K, 3500K, 4000K; CRI80 and CRI90 are available.

Other option: 2700K, 5000K, 5700K, 6500K, red, green, blue, TUNE(2700K-6500K). Contact factory for details.

See page 7 for more specification of spot cluster, see page 8 for information of LED lamping output.



4. DRIVER (REMOTE ONLY)

STD	Non-dimmable
0/1-10V	1-10V / 0-10V dimming
DALI	DALI dimming
DMX	DMX dimming
OTHER	Consult factory for options

Recessed

5. FINISH

BK	Matt black powercoat
WH	Matt white powercoat
SG	Silver grey powercoat
CF	Custom finish - RAL or Pantone or other finish options



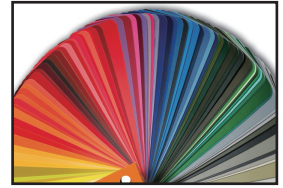
Matt black



Matt white



Silver grey



Custom

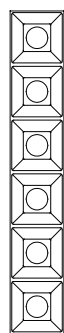
6. OPTIONAL ADD-ONS

EM	1.5 hour emergency kit (remote only)
SS	PIR sensor
OTHERS	Consult factory for options

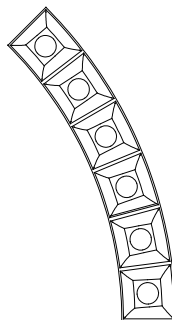
SPECIFICATION DETAILS

SPOT CLUSTER

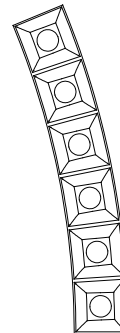
Spot Cluster is a series of straight and arc module with 6-head reflectors and Osram LEDs. Reflector is designed with 50 degree distribution and UGR<15. The series includes a 250mm straight and 2 different outside diameters - $\phi 650\text{mm}$, $\phi 1300\text{mm}$, provides more configuration designs.



Straight



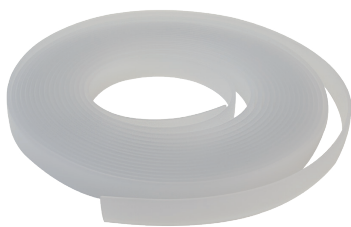
$\phi 650\text{mm}$ -
45 deg arc



$\phi 1300\text{mm}$ -
22.5 deg arc

ROLLED LENS

The optically engineered rolled soft acrylic lens provides smooth, uniform and seamless illumination for linear lengths of 30 meters while dynamically controlling output and reducing glare. The soft acrylic lens rolls out and snaps into the housing profile for easy installation.



Rolled soft acrylic lens



Moonring 2 Snake Spot - MR2SS-RT

ZALITE

Recessed

PERFORMANCE DATA - LED LAMPING

OUTPUT OPTIONS	DELIVERED LUMENS	WATTS	CRI OPTIONS	CCT OPTIONS	LED LAMPING
L-STD	1466	24	80 90	2700K 3000K 3500K 4000K 5000K 6500K	LED strip
L-HI	2062	36.8			LED strip
S-LOW	562	6			One spot cluster
S-STD	738	8.1			One spot cluster
S-HI	915	10.7			One spot cluster

*Note: Data provided for LED strip options is from a photometric test of 1 meter fixture output with 90CRI at 4000K using a non-dimmable driver.
Data provided for spot cluster options is from a photometric test of one set of spot cluster output with 90CRI at 4000K using a non-dimmable driver.*



*More information and data,
please visit:
www.zalite.cn*

V1.0_2022-12