

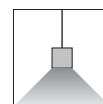
CE IP20 IK08 RoHS

## Features

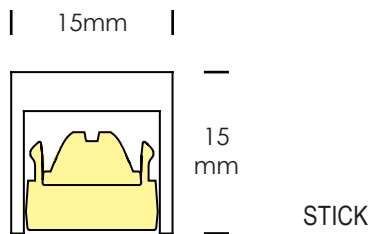
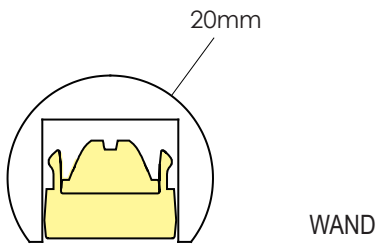
- Ultra-small profile
- Low UGR (<12) module design
- High performance dimmable LED light source
- Wide range of finishes, powder coating, painting, plating
- 100% recyclable, extruded architectural grade T6063 aluminum

## Mounting

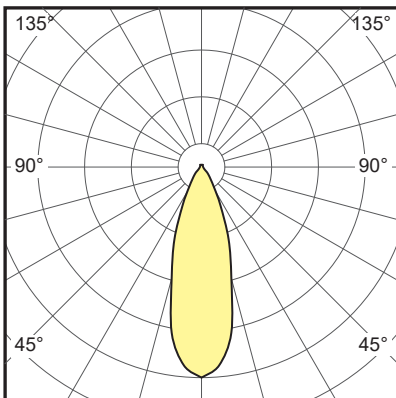
- Suspended



## Dimensions



## Distributions



## Ordering Info

### 1. BASIC MODEL

WAND	Suspended - direct
STICK	Suspended - direct

### 2. SIZE AND SHAPE

xxxxmm - STR	Straight - specify individual or continuous run length in mm
xxxxmm - SQ	Square - specify outside dimension in mm
xxxxmm - REC	Rectangle - specify outside dimension in mm
xxxxmm - TEE	T- Shape - specify length in mm
xxxxmm - Special Shape	Radom connection of sectional straight

\* Sample configuration diagrams as below.



Square



Rectangle



U-Shape



T-Shape



Cross



Zed

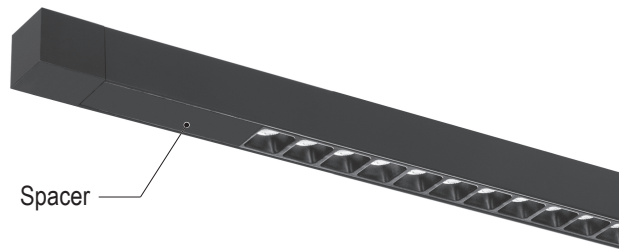
### 3. LED LAMPING - DIRECT LIGHT

<b>LOW - xxxxK</b>	Optic module, low output, 4.2W per module
<b>MED - xxxxK</b>	Optic module, medium output, 6W per module
<b>STD - xxxxK</b>	Optic module, standard output, 8.7W per module
<b>HI - xxxxK</b>	Optic module, high output, 12.2W per module
<b>NONE</b>	No optic module or lens, blank with spacer

Note: Standard CCT: 3000K, 3500K, 4000K; CRI80 and CRI90 are available.

Other option: 2700K, 5000K, 5700K, 6500K, red, green, blue. Contact factory for details.

See page6 for information of LED lamping output.

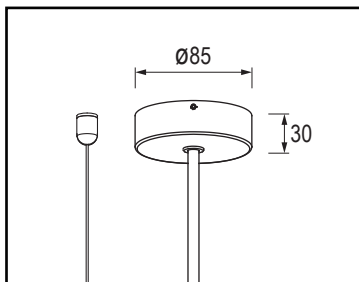


### 4. DRIVER

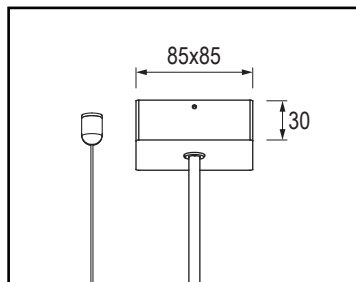
<b>STD</b>	Non-dimmable
<b>0/1-10V</b>	1-10V / 0-10V dimming
<b>DALI</b>	DALI dimming
<b>DMX</b>	DMX dimming
<b>OTHER</b>	Consult factory for options

### 5. SUSPENSION MOUNT CANOPY

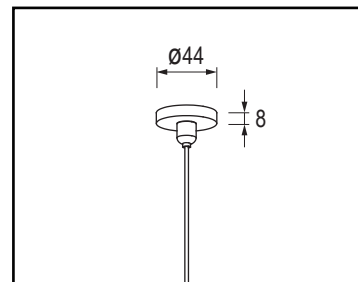
<b>RC</b>	Canopy in round shape - suspended only
<b>SC</b>	Canopy in square shape - suspended only
<b>PS</b>	Powered suspension kits, no canopy- suspended only



Round canopy



Square canopy



Powered suspension kit

### 6. FINISH

<b>BK</b>	Matt black powercoat
<b>WH</b>	Matt white powercoat
<b>SG</b>	Silver grey powercoat
<b>CF</b>	Custom finish - RAL or Pantone or other finish options



Matt black



Matt white



Silver grey



Custom

### 7. OPTIONAL ADD-ONS

<b>EM</b>	1.5 hour emergency kit (remote only)
<b>SS</b>	PIR sensor
<b>OTHERS</b>	Consult factory for options

## Specification Details

### PERFORMANCE DATA - LED LAMPING

OUTPUT OPTIONS	DELIVERED LUMENS	WATTS	CCT OPTIONS	LED LAMPING
LOW-3000K	438	4.2		LED module with OPTIC &louver, 3000K
LOW-4000K	466	4.2	2700K 3000K 3500K 4000K 5000K 6500K	LED module with OPTIC &louver, 4000K
MED-3000K	600	6		LED module with OPTIC &louver, 3000K
MED-4000K	638	6		LED module with OPTIC &louver, 4000K
STD-3000K	834	8.7		LED module with OPTIC &louver, 3000K
STD-4000K	887	8.7		LED module with OPTIC &louver, 4000K
HI-3000K	1138	12.2		LED module with OPTIC &louver, 3000K
HI-4000K	1210	12.2		LED module with OPTIC &louver, 4000K

*Note: Data provided is from a photometric test of one set of LED module with optic output with 80CRI at 4000K.*



*More information and data,  
please visit:  
[www.zalite.cn](http://www.zalite.cn)*

V1.0\_2025-08